



MADAKET WIND TURBINE PROJECT
PROPOSED CONDITIONS WITH ONE 71M TOWER
LOCATION 'A' - VIEWING FROM IN FRONT OF
109 EEL POINT ROAD (LOOKING SOUTH)



MADAKET WIND TURBINE PROJECT
PROPOSED CONDITIONS WITH ONE 71M TOWER
LOCATION 'B' - OVERLOOKING 1 BRAEBURN WAY AND
30 DOUGLAS WAY (LOOKING SOUTHWEST)



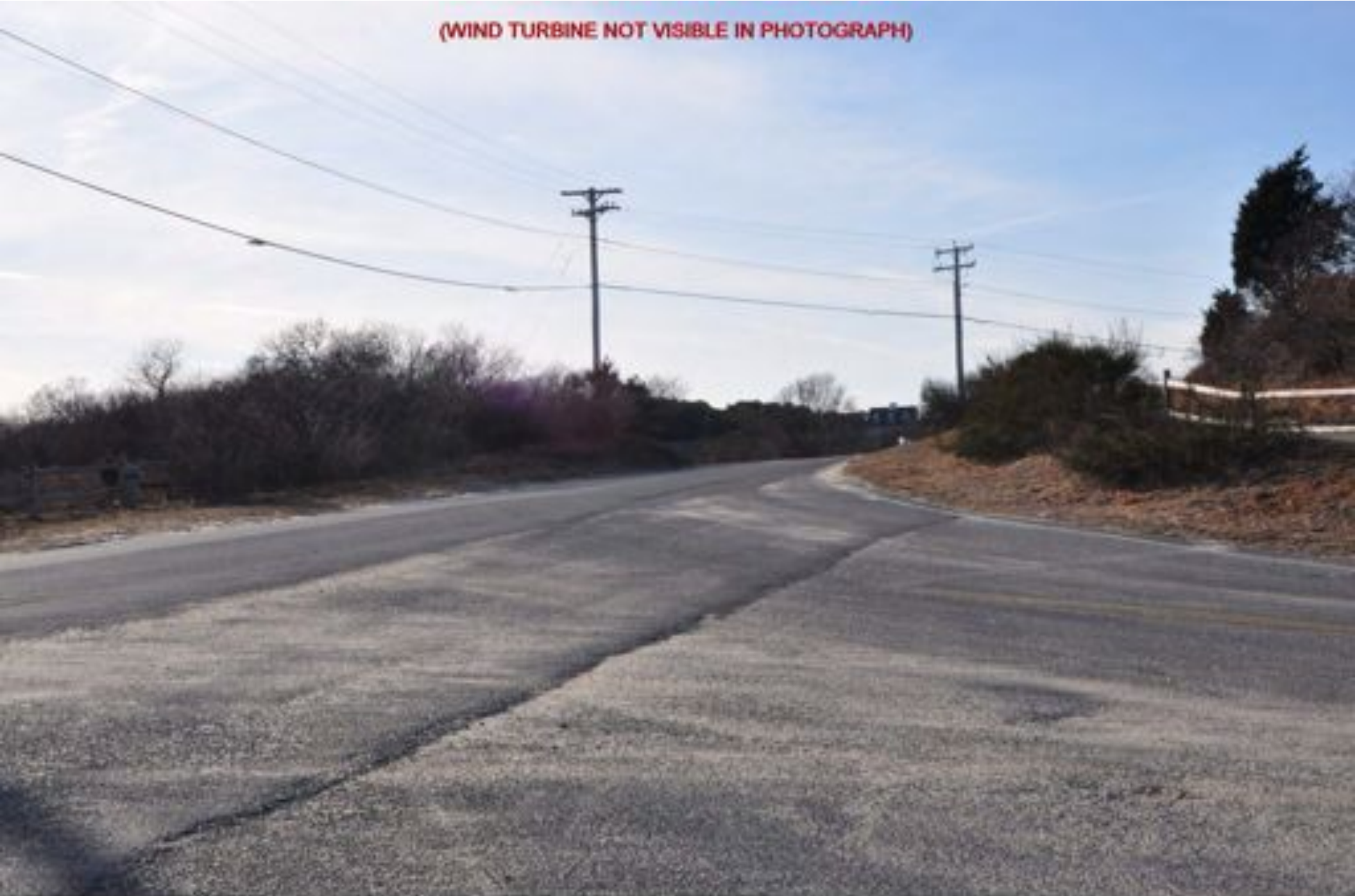
MADAKET WIND TURBINE PROJECT
PROPOSED CONDITIONS WITH ONE 71M TOWER
LOCATION 'C' - OVERLOOKING 3 & 4 FINTRY LANE
(LOOKING SOUTHWEST)

T-1



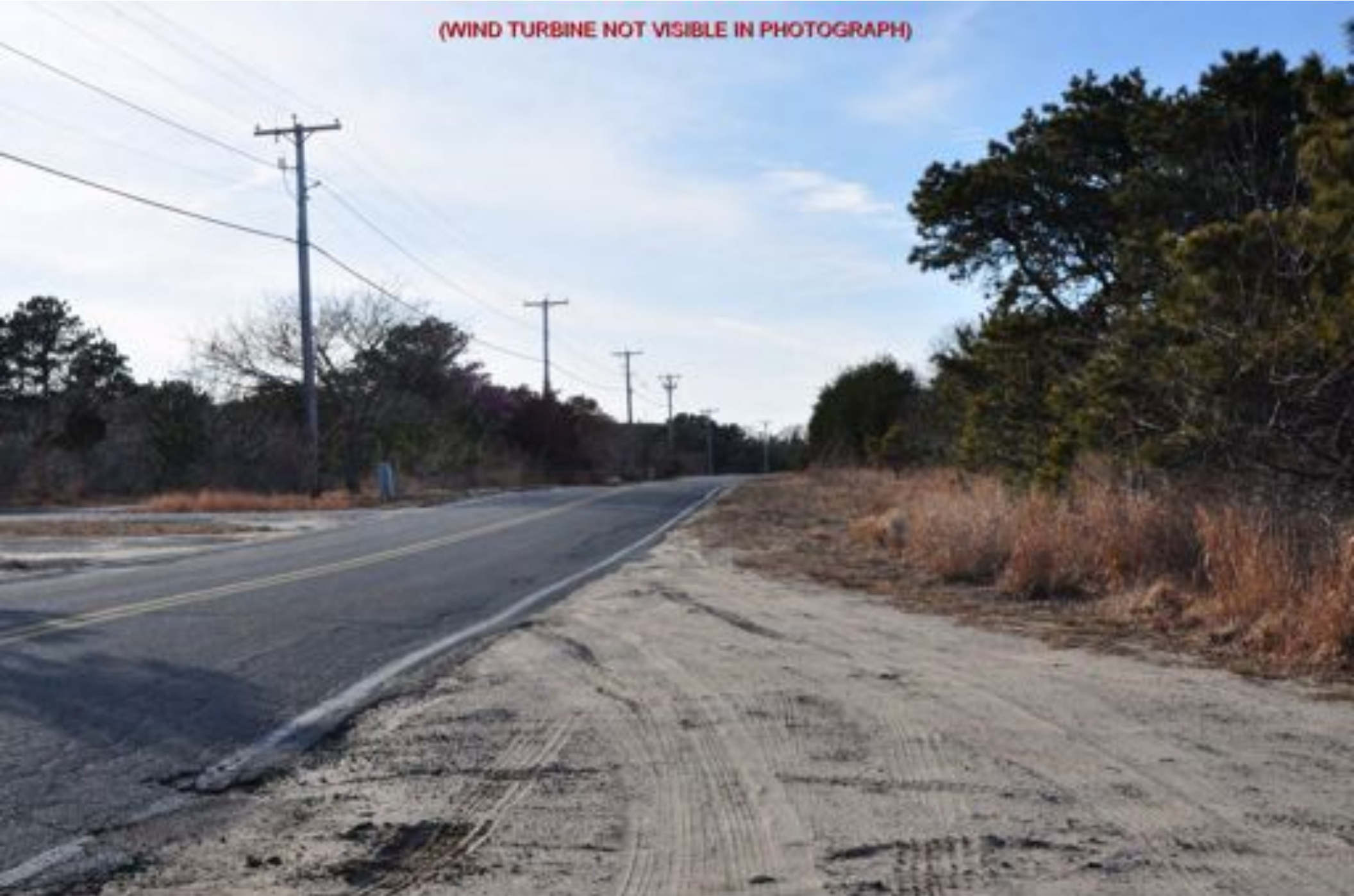
MADAKET WIND TURBINE PROJECT
PROPOSED CONDITIONS WITH ONE 71M TOWER
LOCATION 'D' - 168 MADAKET ROAD (1/2 MILE EAST OF
LANDFILL ENTRANCE) (LOOKING EAST)

(WIND TURBINE NOT VISIBLE IN PHOTOGRAPH)



MADAKET WIND TURBINE PROJECT
PROPOSED CONDITIONS WITH ONE 71M TOWER
LOCATION 'E' - INTERSECTION OF MADAKET ROAD,
CLIFF ROAD, & EEL POINT ROAD (LOOKING WEST)

(WIND TURBINE NOT VISIBLE IN PHOTOGRAPH)



MADAKET WIND TURBINE PROJECT
PROPOSED CONDITIONS WITH ONE 71M TOWER
LOCATION 'F' - LOOKING DOWN MADAKET ROAD
(LOOKING WEST)



MADAKET WIND TURBINE PROJECT
PROPOSED CONDITIONS WITH ONE 71M TOWER
LOCATION 'G' - OVERLOOKING 239 HUMMOCK POND ROAD
(LOOKING NORTHWEST)



MADAKET WIND TURBINE PROJECT
PROPOSED CONDITIONS WITH ONE 71M TOWER
LOCATION 'H' - OVERLOOKING 27 OSPREY WAY
(LOOKING NORTHWEST)



MADAKET WIND TURBINE PROJECT
PROPOSED CONDITIONS WITH ONE 71M TOWER
LOCATION 'L' - INTERSECTION OF SHEEP POND ROAD
AND RED BARN ROAD (LOOKING NORTHEAST)



MADAKET WIND TURBINE PROJECT
PROPOSED CONDITIONS WITH ONE 71M TOWER
LOCATION 'M' - BRIDGE, INTERSECTION OF MASSASOIT
BRIDGE ROAD, AND S. CAMBRIDGE STREET

(WIND TURBINE NOT VISIBLE IN PHOTOGRAPH)



MADAKET WIND TURBINE PROJECT
PROPOSED CONDITIONS WITH ONE 71M TOWER
LOCATION 'M' - OVERLOOKING 326 & 324 MADAKET ROAD
(LOOKING NORTHEAST)



MADAKET WIND TURBINE PROJECT
PROPOSED CONDITIONS WITH ONE 71M TOWER
LOCATION 'O' - INTERSECTION OF MADAKET ROAD &
S. CAMBRIDGE STREET (LOOKING EAST)



MADAKET WIND TURBINE PROJECT
PROPOSED CONDITIONS WITH ONE 71M TOWER
LOCATION 'P' - TAKEN IN FRONT OF 199 MADAKET ROAD
(LOOKING EAST)



MADAKET WIND TURBINE PROJECT
PROPOSED CONDITIONS WITH ONE 71M TOWER
LOCATION 'Q' - OFF NORTH CAMBRIDGE STREET
(LOOKING EAST)



MADAKET WIND TURBINE PROJECT
PROPOSED CONDITIONS WITH ONE 71M TOWER
LOCATION 'R' - IN FRONT OF 51 WARREN'S LANDING ROAD
(LOOKING SOUTHEAST)

(WIND TURBINE NOT VISIBLE IN PHOTOGRAPH)



MADAKET WIND TURBINE PROJECT
PROPOSED CONDITIONS WITH ONE 71M TOWER
LOCATION 'S' - OVERLOOKING 9 & 11 RIDGE LANE
(LOOKING SOUTHEAST)

(WIND TURBINE NOT VISIBLE IN PHOTOGRAPH)



MADAKET WIND TURBINE PROJECT
PROPOSED CONDITIONS WITH ONE 71M TOWER
LOCATION 'T' - TAKEN FROM BACK YARD OF 3 RIDGE LANE
(LOOKING SOUTHEAST)

(WIND TURBINE NOT VISIBLE IN PHOTOGRAPH)



MADAKET WIND TURBINE PROJECT
PROPOSED CONDITIONS WITH ONE 71M TOWER
LOCATION 'U' - INTERSECTION OF WARREN'S LANDING ROAD
& MADAKET ROAD (LOOKING SOUTHEAST)



MADAKET WIND TURBINE PROJECT
PROPOSED CONDITIONS WITH ONE 71M TOWER
LOCATION 'V' - BIRD VIEWING AREA
(OVERLOOKING LONG POND)